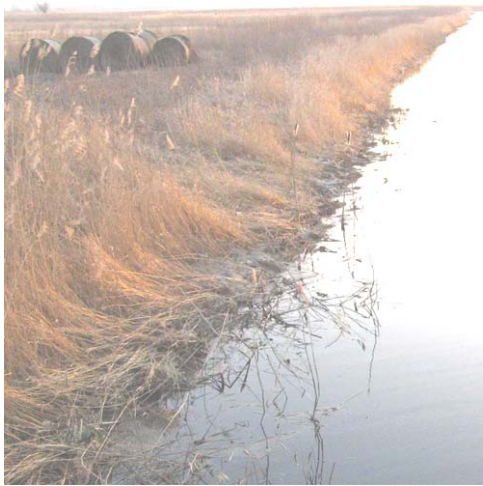




Russian company from Kaliningrad developed new approaches to designing summer polders of Lithuania

Agrobaltika, Ltd., an IT-company from Kaliningrad region, Russia, is a client of Gate2RuBIN partner centre in Kaliningrad region (Kaliningrad Technology Transfer Centre). The company has been developing applied software for designing and reconstructing polder systems in the framework of Tacis-Neighborhood project «Support for the development of agricultural production in the polder lands in the Neighborhood».



Promoting their client's products, Kaliningrad TTC received, in February 2009, an expression of interest from Lithuanian partners in applying this software for reconstructing polder systems of summer polders in Silute district, Klaipėda County of Lithuania. Kaliningrad TTC technology brokers organised negotiations, development and preliminary agreement of documents and a bilateral meeting in Lithuania. After 6-week negotiations, the parties agreed a technical cooperation (testing of new applications, adaptation to specific needs), and a contract was signed between Agrobaltika, Ltd. (Kaliningrad region, Russia), Close Corporation «Silute Polders» (Silute distr., Republic Lithuania) and Silute District Administration «On validation of new approaches to the design of polder systems with application of mathematical simulation».

According to the contract, «Silute Polders» was to provide input data on the condition of polder systems in Silute district and to suggest the ways of exploiting them presently and in the future. Agrobaltika, Ltd. surveyed and integrated the data on polder systems of the Neighborhood, made calculations and evaluated the possibility of using mathematical simulation methods with the data on summer polders of Silute district. Silute District Administration supervised these works and paid for them to Close Corporation «Silute Polders».

Finally, the expected output was achieved: analysis of polder systems in Silute district implemented, input data on the summer polder prepared and used for testing the feasibility and efficiency of new software products based on mathematical simulation methods for designing polder systems.

After completing execution of the contract, the parties confirmed their mutual interest in applying developed and tested mathematical approach in reconstruction of polder systems within the implementation of Lithuanian national plans on melioration systems maintenance.

